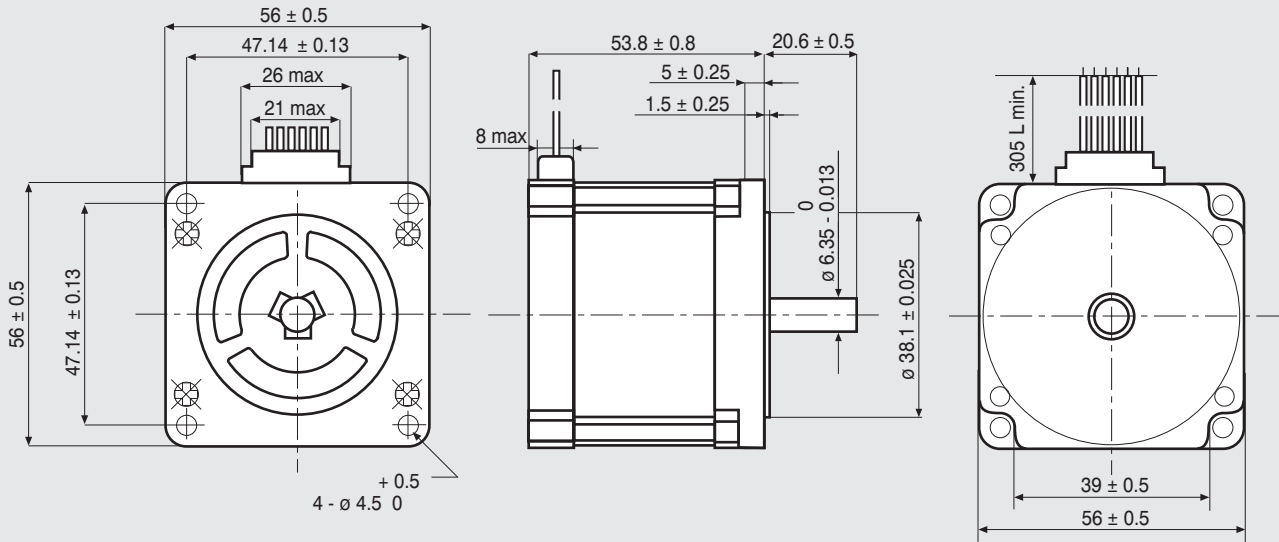


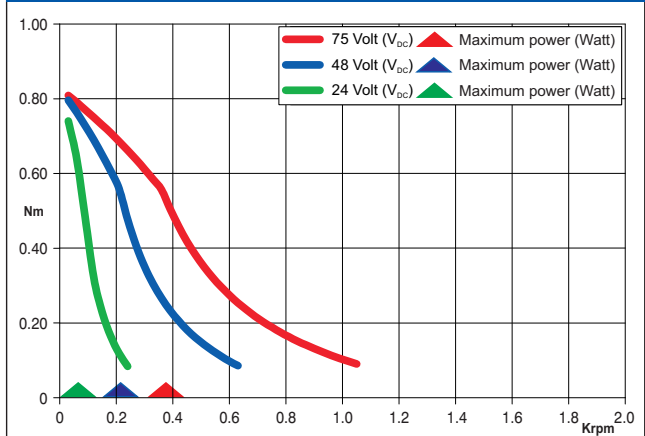
Dimensions (Unit:mm)



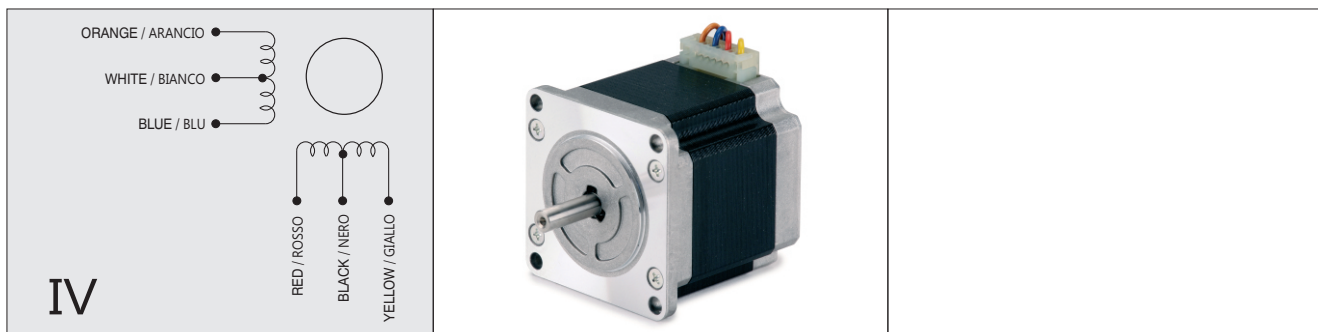
FEATURES

MODEL	103-H7123-0140	
BASIC STEP ANGLE	$1.8^\circ \pm 0.09^\circ$	
BIPOLAR CURRENT	(Amp)	$0.7^{(*)}$
UNIPOLAR CURRENT	(Amp)	1.0
RESISTANCE	(Ohm)	6.7
INDUCTANCE	(mH)	15
BIPOLAR HOLDING TORQUE	(Ncm)	110
UNIPOLAR HOLDING TORQUE	(Ncm)	85
ROTOR INERTIA	(Kg \cdot m 2 x 10 $^{-7}$)	210
THEORETICAL ACCELERATION	(rad x sec. $^{-2}$)	50000
BACK E.M.F.	(V/Krpm)	60
MASS	(Kg)	0.65
LEADS CODE	IV	

TORQUE/SPEED CURVE



^(*)Bipolar series connection.
^(*)Collegamento bipolare serie.



Suggested R.T.A. driver: BSD Series, CSD/A-CSD Series, NDC/A-NDC Series, HGD Series.