

SG-P11-120-025-15-R2-0750-00000

PLANETARY GEARBOXES

SG 120

$i=025$

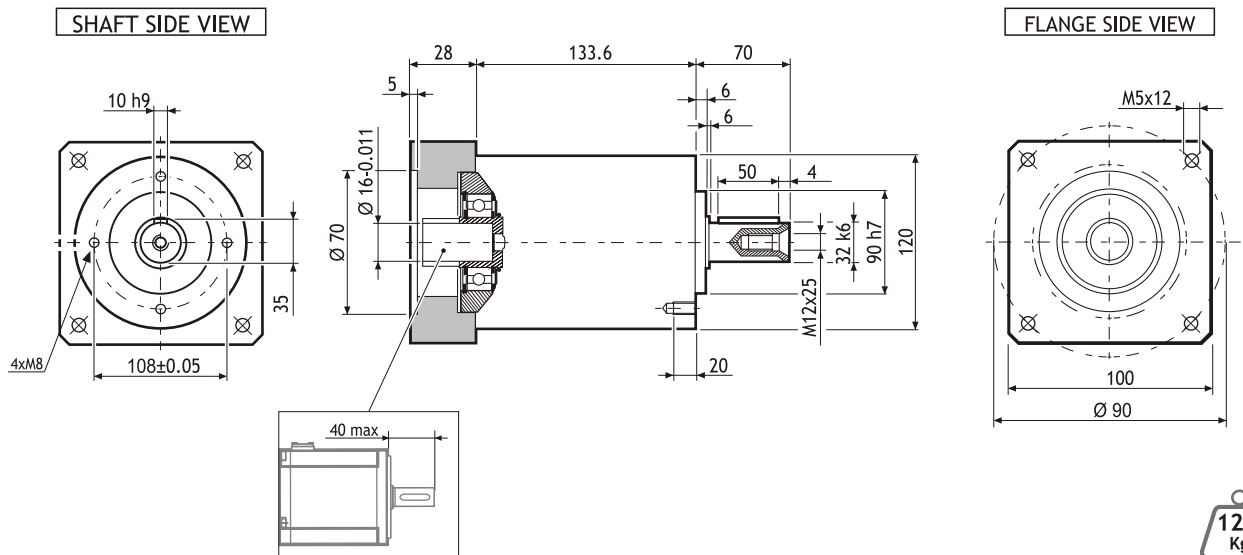
$\varphi=15'$

MADE IN ITALY

IP64



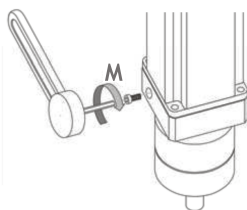
Dimensions (Units:mm)



12.1 Kg

MODEL	Rated output torque [Nm]	Maximum acceleration output torque [Nm]	Emergency step output torque [Nm]	Backlash [arcmin]	Nominal input speed [min ⁻¹]	Maximum momentary input speed [min ⁻¹]	Torsional stiffness [Nm/arcmin]	Maximum radial force applying on output shaft [N]	Maximum axial force applying on output shaft [N]	Gear efficiency [%]	Gear moment of inertia [Kg ^m ²]
SG-P11-120-025-15-R2-0750-00000	110	190	360	15'	3000	4500	22.5	3500	3000	94	0.71x10 ⁻⁴

Suggested motors



R2AA08075 SERIES



MOUNTING OPERATION MODE: ■ Tightening torque M=11 Nm ■ Locking bolt M6 ■ R.T.A. Quality Control