

SG-P11-120-025-15-R2-1000-00000

PLANETARY GEARBOXES

SG 120

$i=025$

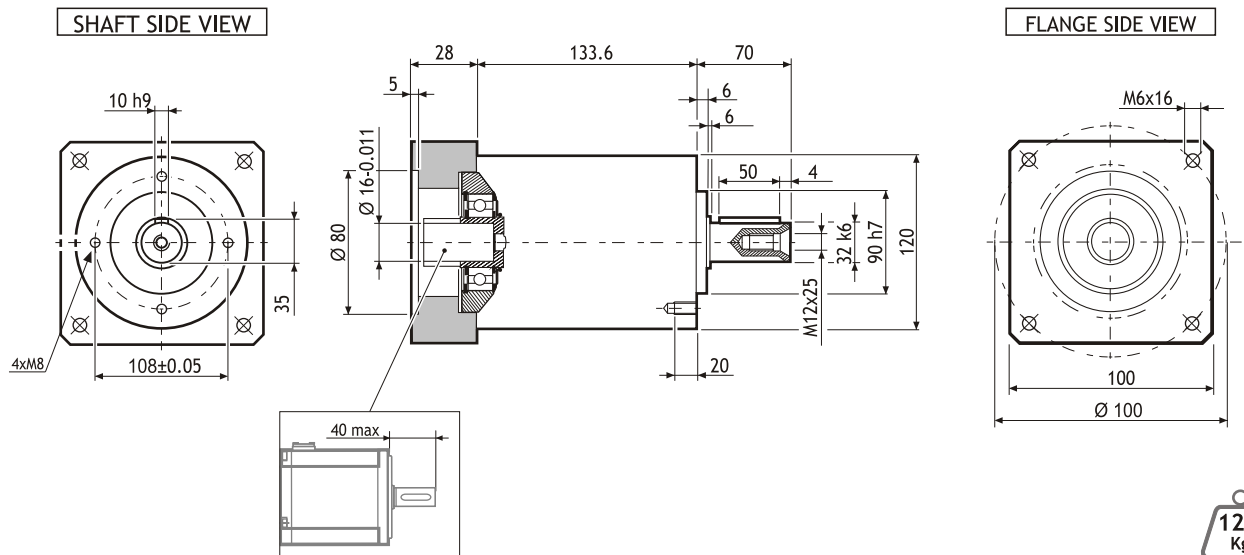
$\varphi=15'$

MADE IN ITALY

IP64



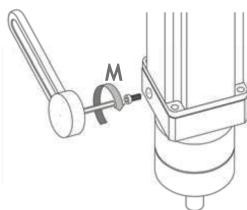
Dimensions (Units:mm)



12.1 Kg

| MODEL | Rated output torque [Nm] | Maximum acceleration output torque [Nm] | Emergency step output torque [Nm] | Backlash [arcmin] | Nominal input speed [min ⁻¹] | Maximum momentary input speed [min ⁻¹] | Torsional stiffness [Nm/arcmin] | Maximum radial force applying on output shaft [N] | Maximum axial force applying on output shaft [N] | Gear efficiency [%] | Gear moment of inertia [Kg ^m ²] |
|---------------------------------|--------------------------|---|-----------------------------------|-------------------|--|--|---------------------------------|---|--|---------------------|--|
| SG-P11-120-025-15-R2-1000-00000 | 110 | 190 | 360 | 15' | 3000 | 4500 | 22.5 | 3500 | 3000 | 94 | 0.71x10 ⁻⁴ |

Suggested motors



R2AAB8100 SERIES



MOUNTING OPERATION MODE: ■ Tightening torque M=11 Nm ■ Locking bolt M6 ■ R.T.A. Quality Control